



Mercury Securities Sdn. Bhd.(113193-W)

(A Participating Organisation of Bursa Malaysia)

Butterworth Office

Wisma Umno
Lorong Bagan Luar 2
12000 Butterworth
Seberang Perai
Tel: 04-3322123

KL Branch

L-7-2, No.2 Jln Solaris
Solaris Mont' Kiara
50480 Kuala Lumpur
Tel: 03-62037227

Melaka Branch

No 81B & 83B
Jalan Merdeka
Taman Melaka Raya
75000 Melaka
Tel: 06-2921898

Penang Branch

2nd Floor
Std Chartered Bank
2 Lebuh Pantai
10300 Penang
Tel: 04-2639118

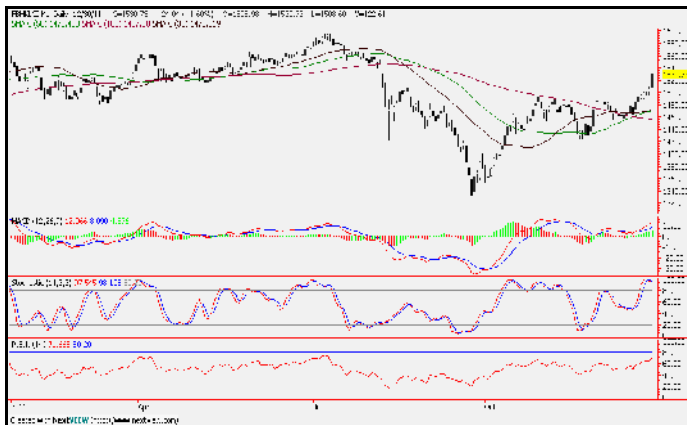
Johor Branch

Suite 17.1 Level 17
Menara Pelangi
Tmn Pelangi
80400 Johor Bahru
Tel: 07-3316992

MARKET FLASH

Tuesday, 3 Jan 2012

FBM KLCI DAILY CHART



TECHNICAL INDICATIONS

Support : 1500, 1470 **Resistance : 1545**
Bias : Upside

Technically speaking, the breakout is a preliminary sign of a trend reversal. The immediate support is now at 1500 followed by 1470 while the resistance is at the previous 1545 gap down level. This may portends better days ahead. At this juncture, the technical development is favorable and traders are advised to stay close to the market for trading opportunities. Friday's rebound, has again improved FBMKLCI's core technical indicators, with both the RSI and stochastic turning up.

COMMENTARY

A strong swing up at the last minute ... Friday's upswing does not really come as a surprise to many market participants as talks on the street mentioned about the possibility of a strong year end window dressing. Index linked blue chips took the lead as in previous rises while the lower priced stocks continued to trade cautiously. Nevertheless, gainers outpaced losers 468 to 327.

Strong Breakout ... The FBMKLCI breezed through 1510 without much resistance on Friday on strong buying support for index linked blue chips, resulting in a 24.04 points gain on the Composite Index.

HAPPY NEW YEAR

MARKET STATISTICS

	Close	Chg.
LOCAL		
FBM KLCI	1530.73	24.04
Volume (m)	1329.4	
Value (RMm)	1527.9	
Up	468	
Down	327	
Unchanged	336	
FOREIGN		
Nikkei	8455.35	56.46
Hang Seng	18434.39	36.47
STI	2646.35	(26.43)
Shanghai CI	2199.42	25.86

BURSA MOVERS

Gainers	Close (RM)	Chg (RM)
PetDag	17.80	0.50
BAT	49.92	0.32
CIMB	7.44	0.28
Maybank	8.58	0.26
JTInter	7.39	0.24

Losers	Close (RM)	Chg(RM)
AIC	1.15	(0.15)
BJAsset-WA	0.235	(0.125)
Waseong	2.07	(0.09)
YTLCmt-LA	2.21	(0.09)
DKSH	1.56	(0.09)

Actives	Close (RM)	Chg(RM)
Kulim-CB	0.15	0.05
Utopia	0.065	0.00
Mulpha	0.395	0.01
KFC-CB	0.105	0.045
Wijaya-WA	0.38	(0.035)

Current Stock Review

Trading buy on breakout– **Ramunia**



Chart wise:

Ramunia Holdings Bhd (7206) – Trading/Services – RM0.345.

Although the gains were relatively mild, the candle is attempting to break out of the downtrend line formed since May last year. In the process, it hauled the stochastics and MACD up but the RSI has turned down instead, thereby, providing a mixed reading.

Still, this can be reversed if the candles penetrate the downtrend line convincingly and above RM0.35. If so, there are trading buy on the breakout opportunities. Failure to clear the line, however, leaves a neutral outlook. The immediate resistance is at RM0.365. The support, meanwhile, is RM0.33.