



Mercury Securities Sdn. Bhd.(113193-W)

(A Participating Organisation of Bursa Malaysia)

Butterworth Office

Wisma Umno
Lorong Bagan Luar 2
12000 Butterworth
Seberang Perai
Tel: 04-3322123

KL Branch

L-7-2, No.2 Jln Solaris
Solaris Mont' Kiara
50480 Kuala Lumpur
Tel: 03-62037227

Melaka Branch

No 81B & 83B
Jalan Merdeka
Taman Melaka Raya
75000 Melaka
Tel: 06-2921898

Penang Branch

2nd Floor
Std Chartered Bank
2 Lebuhr Pantai
10300 Penang
Tel: 04-2639118

Johor Branch

Suite 17.1 Level 17
Menara Pelangi
Tmn Pelangi
80400 Johor Bahru
Tel: 07-3316992

MARKET FLASH

Tuesday, 10 Jan 2012

FBM KLCI DAILY CHART



TECHNICAL INDICATIONS

Support : 1501, 1486

Resistance : 1529, 1546

Bias : Upside

Technically, the candles are still on the climb as it tracks its uptrend line. The uptrend is supported by its mildly positive core indicators. In the interim, the gap of 1529 to 1546 points level remains the elusive target to breach, while on the downside, the immediate support remains at 1501. The uptrend channel support is at 1486, while the other supports are at 1448, 1424 and 1400.

COMMENTARY

Up again, but mixed ... The FBMKLCI continued to gain ground yesterday amid a mixed market environment. The market gyrated between the positive and negative zone for most of the day before ending the day in the strong positive. Proton call warrants gained and were actively traded after reports suggest that DRB Hicom has reaffirmed its interest in taking up a stake from Khazanah Nasional.

On the uptrend ... The key index remains steadfast inside the uptrend channel, thereby preserving its mildly positive outlook.

MARKET STATISTICS

	Close	Chg.
LOCAL		
FBM KLCI	1521.73	7.60
Volume (m)	1642.7	
Value (RMm)	1706.1	
Up	491	
Down	264	
Unchanged	301	
FOREIGN		
Nikkei	8390.35	-
Hang Seng	18865.72	272.66
STI	2691.28	(24.31)
Shanghai CI	2225.89	62.49

BURSA MOVERS

Gainers	Close (RM)	Chg (RM)
BAT	49.84	1.08
Dlady	26.00	0.80
Genp	8.90	0.33
Harvest	1.41	0.33
Harvest-WA	1.14	0.32

Losers	Close (RM)	Chg(RM)
Nestle	56.00	(0.30)
LMCemnt	6.90	(0.20)
BHIC	3.79	(0.19)
KYM-WA	1.05	(0.13)
SAB	2.17	(0.11)

Actives	Close (RM)	Chg(RM)
KHSB	0.50	0.135
Sanichi	0.19	0.025
Nextnat	0.125	0.01
Proton-CG	0.555	0.075
Proton-CH	0.50	0.07

Current Stock Review

Trading Buy – **Bonia**

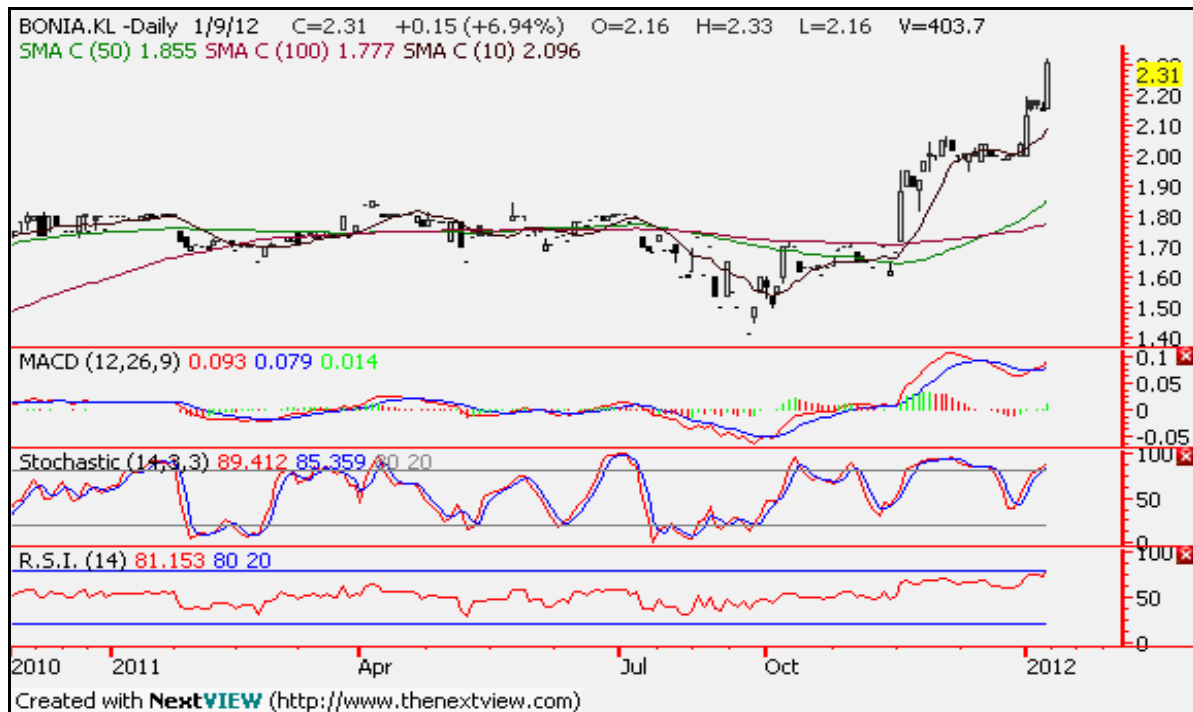


Chart wise:

Bonia Corporation Bhd (9288) – Consumer – RM2.31.

The share price is forming a new and steeper channel after breaking away from the previous channel. Touching new high in recent days, Bonia which is involved in leather goods, menswear and watches, is set to maintain its bullish streak as it continue to impress investors with its performance.

Its MACD has cut up positively in conjunction with the new channel, although the overbought stochastics may result in short-term pullback. The new support within the new channel is RM2.15. We are calling a trading buy based on its bullish channel.