

Mercury Securities Sdn. Bhd. (113193-W)

(A Participating Organisation of Bursa Malaysia)

Butterworth Office

Wisma Umno
Lorong Bagan Luar 2
12000 Butterworth
Seberang Perai
Tel: 04-3322123

KL Branch

L-7-2, No.2 Jln Solaris
Solaris Mont' Kiara
50480 Kuala Lumpur
Tel: 03-62037227

Melaka Branch

No 81B & 83B
Jalan Merdeka
Taman Melaka Raya
75000 Melaka
Tel: 06-2921898

Penang Branch

2nd Floor
Std Chartered Bank
2 Lebuhr Pantai
10300 Penang
Tel: 04-2639118

Johor Branch

Suite 17.1 Level 17
Menara Pelangi
Tmn Pelangi
80400 Johor Bahru
Tel: 07-3316992

MARKET FLASH

Friday, 14 Oct 2011

FBM KLCI DAILY CHART



TECHNICAL INDICATIONS

Support : 1400, 1353 Resistance : 1448, 1480
Bias : Downtrend

This time, optimism and momentum is on the climb and coupled with the increasing market participation, they may just be the impetuses needed for the stubborn 50-day SMA of 1448 level to be breached. This level is likely to be a tough resistance to break as it was support on the uptrend in the early part of 2011. Support is at the 1400 points level

COMMENTARY

Market still up ... The FBMKLCI maintained its uptrend despite trading being mixed for most of the day. Bouts of profit taking were seen with rotational plays prominently featured on lower liner stocks, particularly on property stocks. The market started strongly, rising to above 1445 before turning mixed and lower as the day progressed. However, the market firmed up again towards the end of the day on some buying support. Market interest remained strong with trading volumes topping the 1.5bn mark, its highest level in weeks on the back of increasing retail participation.

Reaching major resistance ... Although the FBMKLCI is maintaining its upward streak, it is reaching the crossroads as it nears its major resistance of 1450.

MARKET STATISTICS

	Close	Chg.
LOCAL		
FBM KLCI	1444.87	16.37
Volume (m)	1506.9	
Value (RMm)	1956.9	
Up	677	
Down	174	
Unchanged	233	
FOREIGN		
Nikkei	8823.25	84.35
Hang Seng	18757.81	428.35
STI	2733.97	(3.78)
Shanghai CI	2438.79	18.79

BURSA MOVERS

Gainers	Close (RM)	Chg (RM)
BAT	44.50	0.90
PPB	16.86	0.56
MISC	6.41	0.41
Digi	30.88	0.40
Chintek	8.25	0.35

Losers	Close (RM)	Chg(RM)
Asiafle	3.55	(0.24)
Gnealy	5.55	(0.10)
TopGlov	4.12	(0.08)
Affin	2.91	(0.08)
FACBInd	0.51	(0.075)

Actives	Close (RM)	Chg(RM)
MBSB-WA	0.745	0.015
UOADev	1.50	0.22
Timecom	0.57	0.02
Malton	0.61	0.03
MBSB-CA	0.13	0.02

Current Stock Review

Trading buy – **Daya Materials Bhd.**

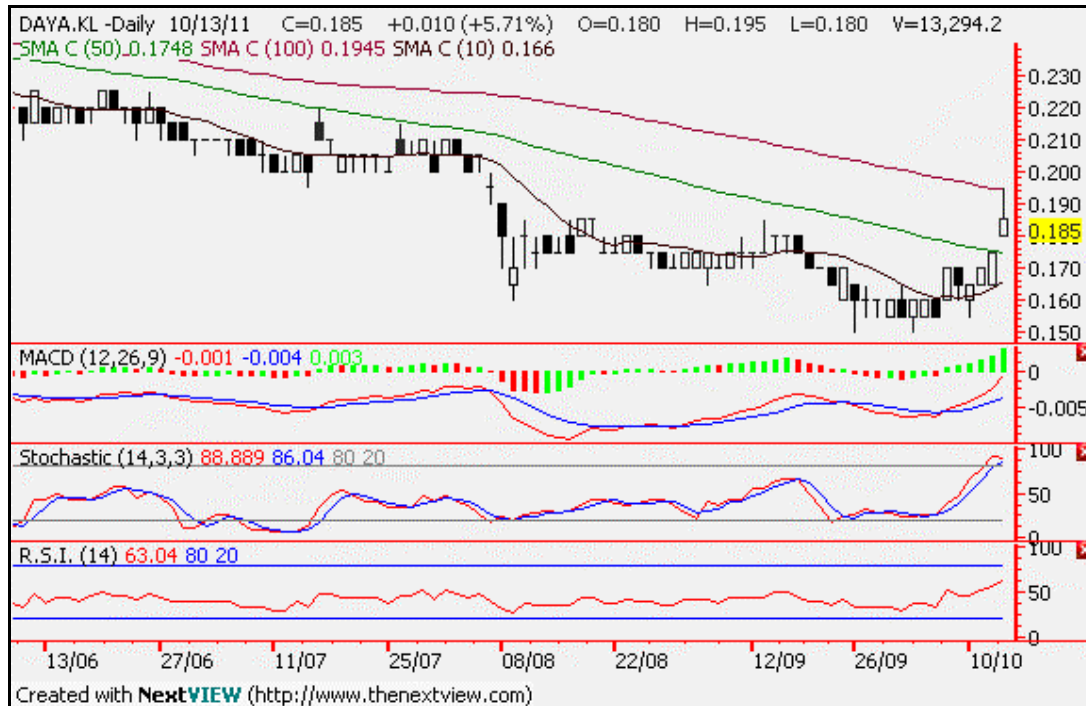


Chart wise:

Daya Materials Bhd (0091) – Trading/Services – RM0.185.

Daya's candles sprung up yesterday which saw the candles breaking its recent high of RM0.185. For now, there continues to be strength for further upsides despite its momentum indicators springing up above their respective upper limit lines.

The lagging MACD has also crossed the trigger line on the upside, providing another positive signal. Therefore, Daya is a Trading Buy and remains so long as it stays above RM0.18. The resistance is at RM0.20. The other support is at RM0.155.