



# Mercury Securities Sdn. Bhd. (113193-W)

(A Participating Organisation of Bursa Malaysia)

## Butterworth Office

Wisma Umno  
Lorong Bagan Luar 2  
12000 Butterworth  
Seberang Perai  
Tel: 04-3322123

## KL Branch

L-7-2, No.2 Jln Solaris  
Solaris Mont' Kiara  
50480 Kuala Lumpur  
Tel: 03-62037227

## Melaka Branch

No 81B & 83B  
Jalan Merdeka  
Taman Melaka Raya  
75000 Melaka  
Tel: 06-2921898

## Penang Branch

2nd Floor  
Std Chartered Bank  
2 Lebuhr Pantai  
10300 Penang  
Tel: 04-2639118

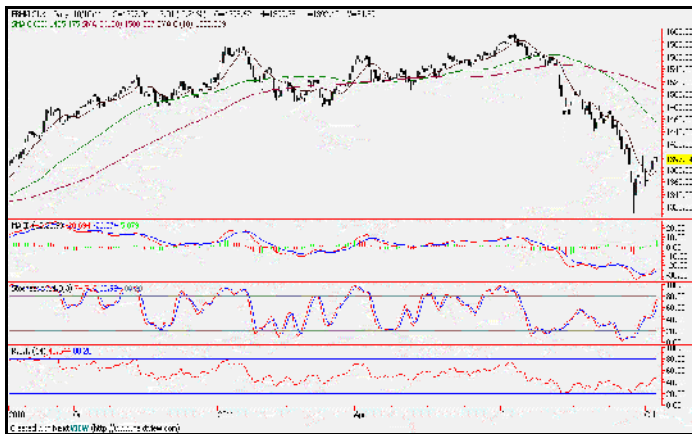
## Johor Branch

Suite 17.1 Level 17  
Menara Pelangi  
Tmn Pelangi  
80400 Johor Bahru  
Tel: 07-3316992

# MARKET FLASH

Tuesday, 11 Oct 2011

## FBM KLCI DAILY CHART



### TECHNICAL INDICATIONS

**Support : 1350, 1320**      **Resistance : 1403, 1430**  
**Bias : Downtrend**

*Despite the market reverting to its bearish undertones, its' basebuilding efforts remain intact for now so long as the key index does not fall below its 1350 level. A fall below the 1350 level not only marks the market failure to find a base, but more crucially, suggest that further downsides are in store before a lower base can be found.*

### COMMENTARY

**No Follow through support ...** The anticipated follow through support failed to materialize yesterday with the market purging some of the gains it attained last week. In particular, there was little buying support on the blue chips and with market interest staying lacklustre, the market was once again weighted down by the incessant selling. This resulted in the key index staying in the negative zone for the whole day and even tested a low of 1392 points in the morning session, but managed to end the day off its low.

**Staying close to 1400, base building still intact for now ...** The market inability to sustain its recovery is a disappointment as the weakness has once again left the market in a dire position.

## MARKET STATISTICS

	Close	Chg.
<b>LOCAL</b>		
FBM KLCI	1397.04	(3.01)
Volume (m)	584.9	
Value (RMm)	632.7	
Up	278	
Down	335	
Unchanged	267	

### FOREIGN

Nikkei	8605.62	83.60
Hang Seng	17711.06	4.05
STI	2668.30	28.00
Shanghai CI	2344.79	(14.43)

### BURSA MOVERS

Gainers	Close (RM)	Chg (RM)
DLady	18.34	0.30
AIC	1.45	0.30
TWS	8.17	0.26
JTInter	6.06	0.26
APM	4.60	0.23

Losers	Close (RM)	Chg(RM)
Perstim	3.61	(0.37)
UtdPlt	16.88	(0.30)
KLK	20.34	(0.28)
LMCemnt	6.62	(0.26)
Chintek	7.90	(0.20)

Actives	Close (RM)	Chg(RM)
MBFHLDG-WA	0.06	0.015
Tejari	0.06	0.00
Dutaland	0.65	0.06
Dutaland-WA	0.115	0.02
Gpro	0.16	0.01

## Current Stock Review

### Avoid – **MayBulk Bhd.**



### Chart wise:

#### Malaysian Bulk Carriers Bhd (5077) – Trading/Services – RM1.70.

The share price appears to be caught within a consolidating pattern. Due to low share liquidity and profile nature, the stock had been trading in a sluggish pattern. The trend will likely to be maintained in the immediate to short-term barring any new developments.

Nevertheless, a steady earnings growth will eventually attract investors and provide support for the share to chart higher grounds. Support is at RM1.60 while resistance is at RM1.90.