



Mercury Securities Sdn. Bhd. (113193-W)

(A Participating Organisation of Bursa Malaysia)

Butterworth Office

Wisma Umno
Lorong Bagan Luar 2
12000 Butterworth
Seberang Perai
Tel: 04-3322123

KL Branch

L-7-2, No.2 Jln Solaris
Solaris Mont' Kiara
50480 Kuala Lumpur
Tel: 03-62037227

Melaka Branch

No 81B & 83B
Jalan Merdeka
Taman Melaka Raya
75000 Melaka
Tel: 06-2921898

Penang Branch

2nd Floor
Std Chartered Bank
2 Lebuh Pantai
10300 Penang
Tel: 04-2639118

Johor Branch

Suite 17.1 Level 17
Menara Pelangi
Tmn Pelangi
80400 Johor Bahru
Tel: 07-3316992

MARKET FLASH

Friday, 20 May 2011

FBM KLCI DAILY CHART



TECHNICAL INDICATIONS

Support : 1525, 1500

Resistance : 1545, 1565

Bias : Consolidation

The index remains bullish, still above its short-term moving averages after the mild correction. The index is perched at its 1544 resistance level and the next resistance is at 1565. The next few days will reveal whether the index has the strength to clear the hurdles to charge higher.

COMMENTARY

Rebounding oil prices offset volatile ringgit ... The ringgit continued to be volatile and this attracted more buying interest in selective stocks although profit taking kept emerging from time to time. Although the market surged to touch 1550, lack of momentum and follow-through support caused the market to retrace its steps to the 1545 level. Oil prices that recovered back to near the USD99-100 level also checked sentiment as the concern of inflation loomed in the background. Profit takings were seen in several ACE market counters that was actively traded over the past month.

Taking a breather... Despite charging higher during the early part of trading, the index failed to sustain its position and fell back as profit-taking activities emerged.

MARKET STATISTICS

| | Close | Chg. |
|----------------|----------|---------|
| LOCAL | | |
| FBM KLCI | 1,544.02 | 2.75 |
| Volume (m) | 891 | |
| Value (RMm) | 1,485 | |
| Up | 371 | |
| Down | 371 | |
| Unchanged | 318 | |
| FOREIGN | | |
| Nikkei | 9662.08 | 95.06 |
| Hang Seng | 23163.38 | 152.24 |
| STI | 3172.56 | 31.35 |
| Shanghai CI | 2859.57 | (13.20) |

BURSA MOVERS

| Gainers | Close (RM) | Chg (RM) |
|---------|------------|----------|
| TWS | 10.28 | 0.48 |
| Pharma | 6.00 | 0.45 |
| KLK | 21.80 | 0.30 |
| Fareast | 7.50 | 0.30 |
| Dlady | 17.84 | 0.28 |

| Losers | Close (RM) | Chg(RM) |
|---------|------------|---------|
| Petdag | 15.40 | (0.40) |
| PPB | 17.30 | (0.20) |
| LMCemnt | 7.31 | (0.19) |
| BAT | 46.36 | (0.14) |
| Harison | 3.82 | (0.12) |

| Actives | Close (RM) | Chg(RM) |
|---------|------------|---------|
| Ingens | 0.195 | (0.015) |
| PJI-WA | 0.16 | (0.005) |
| PJI | 0.19 | (0.005) |
| Amedia | 0.275 | 0.03 |
| Ijacobs | 0.36 | (0.07) |

Current Stock Review

Trading Sell – Guan Chong Bhd.

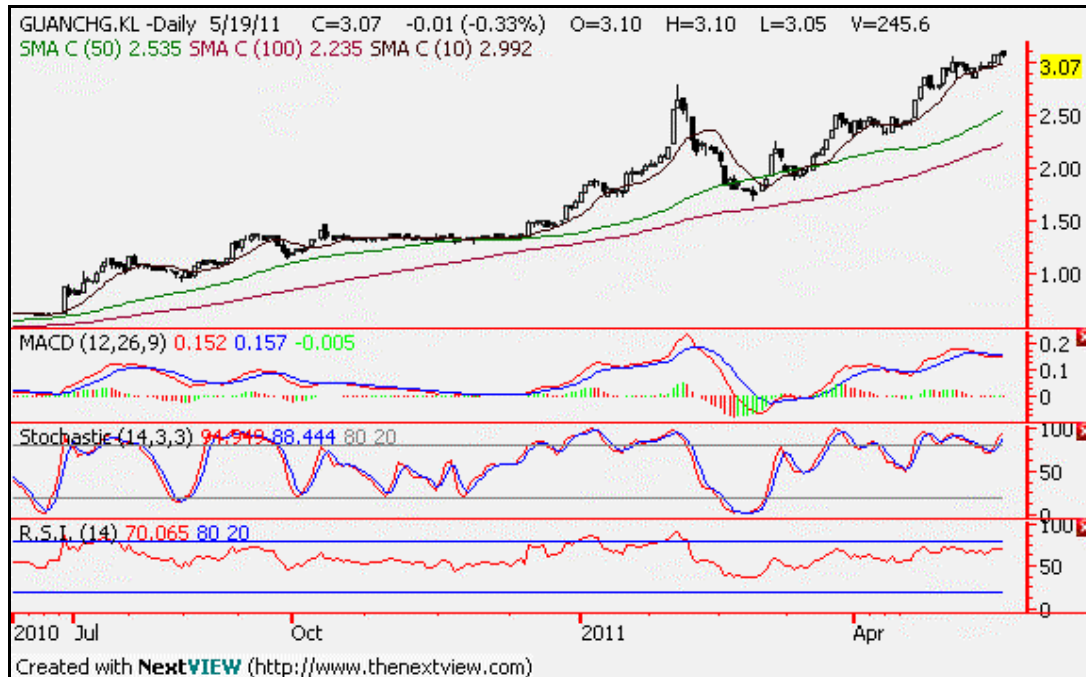


Chart wise:

Guan Chong Bhd (5102) – Consumer Products – RM3.07.

Guan Chong was a breakout buy earlier, counting on its momentum to bring the price higher. As it turned out, Guan Chong rose to the occasion and had appreciated handsomely, from its breakout point of RM2.50. For the traders, it is an opportune time to unload while the going is good as its technical indicators are fast getting overbought.

Although it is possible that Guan Chong may continue with its north-bound journey, it may do so only after a consolidation. Hence, we are calling for a trading sell at this juncture.