



# Mercury Securities Sdn. Bhd.(113193-W)

(A Participating Organisation of Bursa Malaysia)

## Butterworth Office

Wisma Umno  
Lorong Bagan Luar 2  
12000 Butterworth  
Seberang Perai  
Tel: 04-3322123

## KL Branch

L-7-2, No.2 Jln Solaris  
Solaris Mont' Kiara  
50480 Kuala Lumpur  
Tel: 03-62037227

## Melaka Branch

No 81B & 83B  
Jalan Merdeka  
Taman Melaka Raya  
75000 Melaka  
Tel: 06-2921898

## Penang Branch

2nd Floor  
Std Chartered Bank  
2 Lebuhr Pantai  
10300 Penang  
Tel: 04-2639118

## Johor Branch

Suite 17.1 Level 17  
Menara Pelangi  
Tmn Pelangi  
80400 Johor Bahru  
Tel: 07-3316992

# MARKET FLASH

Monday, 1 Aug 2011

## FBM KLCI DAILY CHART



### TECHNICAL INDICATIONS

Support : 1543, 1525                      Resistance : 1570  
Bias : Downtrend

*In the meantime, the technical outlook continues to weaken with its indicators all on the slide, indicating further weakness ahead. This may push the candles to breach the level of 1543 and if so, the bearish spell will sustain longer and damping hopes for a quick rebound. Below 1543 support moves to 1525.*

### COMMENTARY

**Still down ...** The FBMKLCI continues to lose ground on the back of persistent selling of heavyweights. The key index was briefly in the positive zone at the start of trading, but soon reversed its position and even succumbing to a low of 1545 in the morning session. As usual, the round of last minute traded helped to cushion the index's fall and kept the candle above the level of 1543.

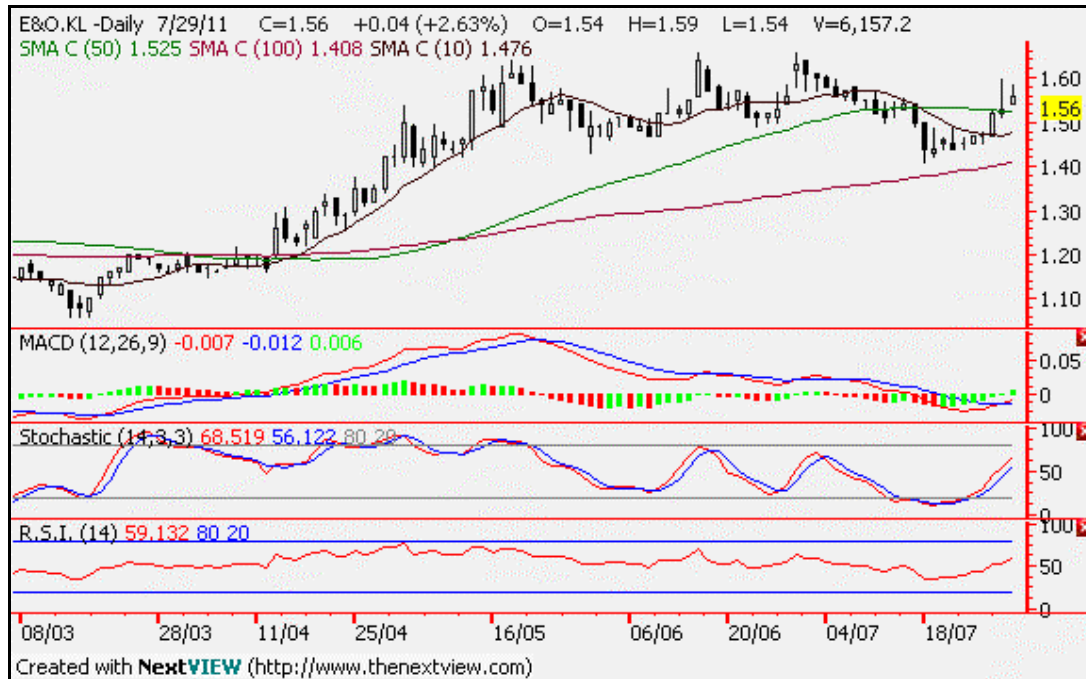
**Bears still rule ...** The FBMKLCI's weakness is still ringing loud as sentiments remain frail, which will keep investors away from the market. As it is, investors are still digesting the possible impact of an US debt ceiling impasse.

## MARKET STATISTICS

	Close	Chg.
<b>LOCAL</b>		
FBM KLCI	1,548.81	(3.10)
Volume (m)	1108	
Value (RMm)	1717	
Up	306	
Down	426	
Unchanged	315	
<b>FOREIGN</b>		
Nikkei	9833.03	(68.32)
Hang Seng	22440.25	(130.49)
STI	3189.26	(0.59)
Shanghai CI	2701.73	(7.05)
<b>BURSA MOVERS</b>		
<b>Gainers</b>		
UtdPlt	20.62	0.62
KSL-WR	0.315	0.31
Annjoo	2.99	0.29
Tasek	8.00	0.24
HLSCorp	0.35	0.225
<b>Losers</b>		
Nestle	47.10	(0.58)
MISC	7.45	(0.29)
TWS	9.60	(0.20)
Dlady	19.00	(0.20)
Carlsbg	7.35	(0.18)
<b>Actives</b>		
Ingens	0.05	(0.015)
DutaInd-WA	0.16	(0.005)
Ingens-WA	0.025	(0.005)
DutaInd	0.60	(0.015)
CIMB	8.27	(0.04)

## Current Stock Review

### Trading buy – E & O Bhd.



#### Chart wise:

#### E & O Bhd (3417) – Properties – RM1.56.

E & O's candle registered a recovery that led both its main momentum indicators to above their respective upper limit lines and to allow the candles to confirm their stay above the RM1.40 level.

Meanwhile, there is still strength in the indicators, therefore more near term upsides are still in the offing. Meanwhile, the lagging MACD has also crossed the trigger line and is also starting to look positive. The stock resistance is at RM1.60, while the support is at RM1.40.