



# Mercury Securities Sdn. Bhd.(113193-W)

(A Participating Organisation of Bursa Malaysia)

## Butterworth Office

Wisma Umno  
Lorong Bagan Luar 2  
12000 Butterworth  
Seberang Perai  
Tel: 04-3322123

## KL Branch

L-7-2, No.2 Jln Solaris  
Solaris Mont' Kiara  
50480 Kuala Lumpur  
Tel: 03-62037227

## Melaka Branch

No 81B & 83B  
Jalan Merdeka  
Taman Melaka Raya  
75000 Melaka  
Tel: 06-2921898

## Penang Branch

2nd Floor  
Std Chartered Bank  
2 Lebuhr Pantai  
10300 Penang  
Tel: 04-2639118

## Johor Branch

Suite 17.1 Level 17  
Menara Pelangi  
Tmn Pelangi  
80400 Johor Bahru  
Tel: 07-3316992

# MARKET FLASH

## FBM KLCI DAILY CHART



### TECHNICAL INDICATIONS

Support : 1445 Resistance : 1500  
Bias : Downtrend

*Under the prevailing conditions, the bearish trend is still a feature with the 1,445 level remaining the key interim support. This level has held up well for the past week as local institutions have provide support, without which the key index would have already slipped lower.*

### COMMENTARY

**Lack of interest sustains ...** The key index slipped again as market interest remained lackluster. As in the previous few trading sessions, the market started on a positive note, only to succumb to weaker conditions as the day wore on. Overall trading volumes were also on the slide again. CIMB and Axiata she 35 sen and 22 sen respectively as losers continue to outpaced gainers, but Genting and Petronas Dagangan gained to limit the market's fall.

**Market weakness still a dominant feature ...** The FBMKLCI's immediate outlook remains frail as the lack of fresh buying is hampering any quick recovery efforts.

Friday, 26 Aug 2011

### MARKET STATISTICS

	Close	Chg.
<b>LOCAL</b>		
FBM KLCI	1,464.74	(4.41)
Volume (m)	833.9	
Value (RMm)	2022	
Up	240	
Down	429	
Unchanged	311	
<b>FOREIGN</b>		
Nikkei	8772.36	132.75
Hang Seng	19752.48	285.69
STI	2765.74	45.84
Shanghai CI	2615.26	74.17

### BURSA MOVERS

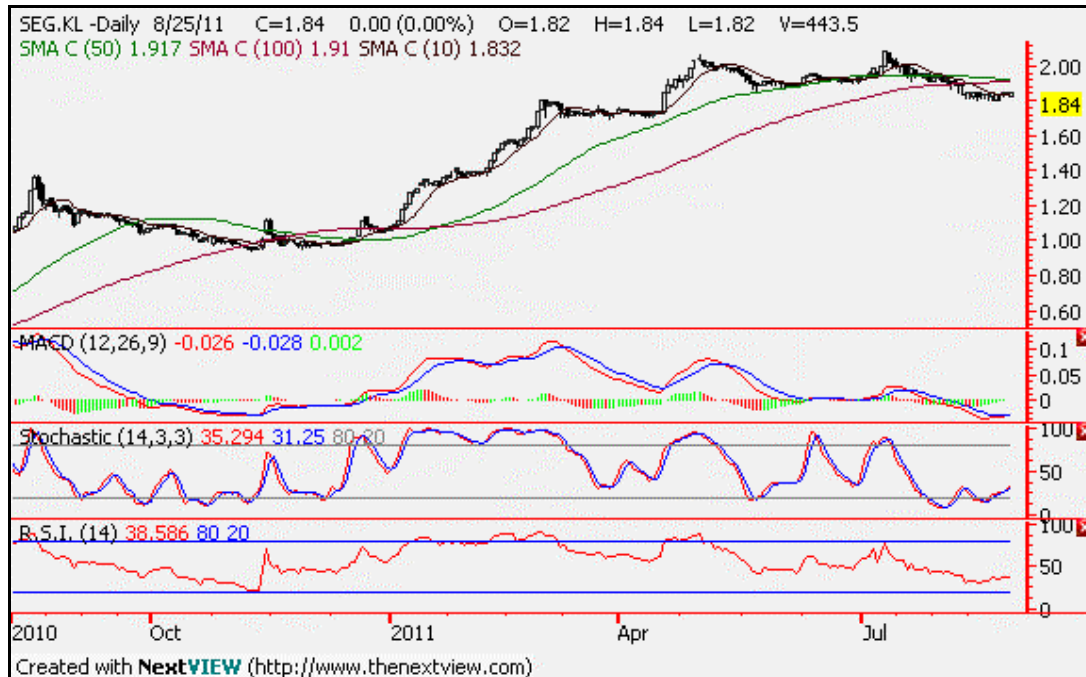
Gainers	Close (RM)	Chg (RM)
BAT	44.48	0.98
PetDag	17.60	0.40
Genting	9.78	0.26
PPB	17.10	0.22
GenP	7.24	0.20

Losers	Close (RM)	Chg(RM)
RHBCap	8.32	(0.58)
Cimb	7.25	(0.35)
F & N	16.50	(0.32)
Axiata	4.63	(0.22)
Fareast	7.00	(0.20)

Actives	Close (RM)	Chg(RM)
CIMB	7.25	(0.35)
Axiata	4.63	(0.22)
TM	4.23	0.05
DVM	0.11	(0.005)
Maybank	8.73	(0.01)

## Current Stock Review

### Trading Sell – **SEGi Bhd.**



#### Chart wise:

#### SEG International Bhd (9792) – Trading/Services – RM1.84.

Although SEGi share price did managed to achieve the RM2.00 breakout, the momentum was cut short by the sudden sentiment shift in second and third liners when the market tanked.

Subsequently, it fell and broke through the RM1.90 support as well as its ascending support line. At the same time, its technical indicators are also languishing in the oversold position and will take time to recover. Hence, we are calling for a trading sell on SEGi.